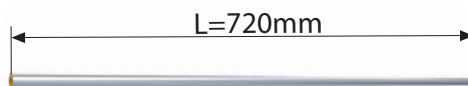


LB = lengte van de handdoekbeugel
LB = Largeur du porte-serviettes
LB = Breite des Handtuchbügels
LB = Width of the towel rail



| L | X=Y-2 | LB |
|-----|-------|-----|
| 720 | 6 | 457 |
| 720 | 5 | 382 |
| 720 | 4 | 307 |
| 720 | 3 | 232 |

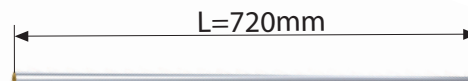
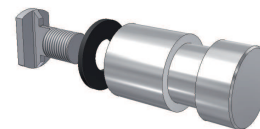
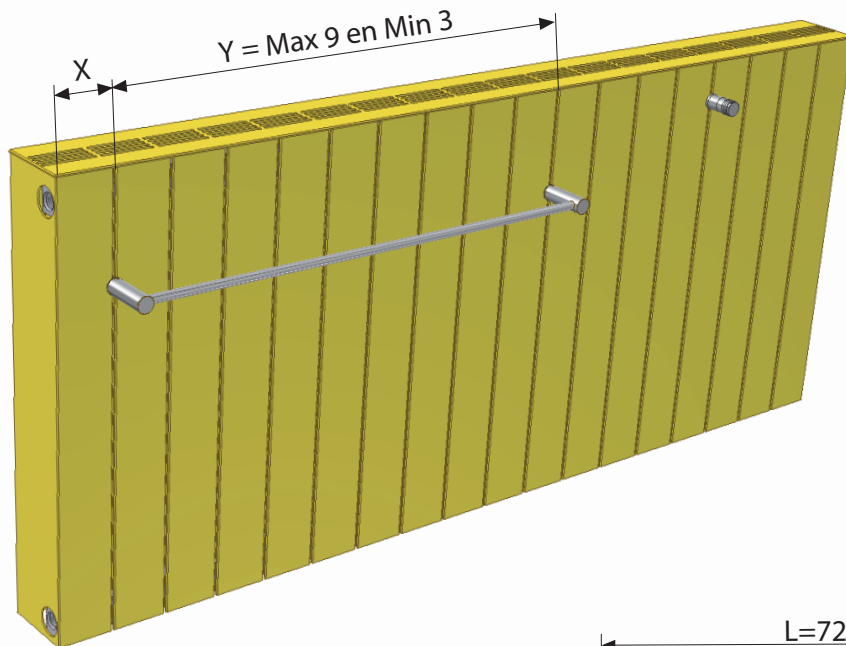
MONTAGEVOORSCHRIFT

MOUNTING INSTRUCTIONS

MONTAGE-ANLEITUNG

INSTRUCTIONS DE MONTAGE

Luxe Acc. Zaros / Veltis H100



LB = lengte van de handdoekbeugel
LB = Largeur du porte-serviettes
LB = Breite des Handtuchbügels
LB = Width of the towel rail

| L | Y | LB |
|-----|---|-----|
| 720 | 9 | 682 |
| 720 | 8 | 607 |
| 720 | 7 | 532 |
| 720 | 6 | 457 |
| 720 | 5 | 382 |
| 720 | 4 | 307 |
| 720 | 3 | 232 |